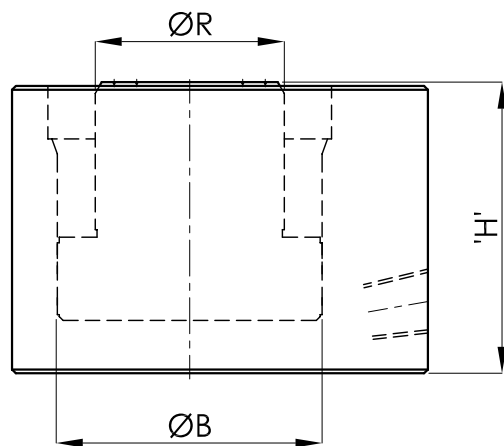
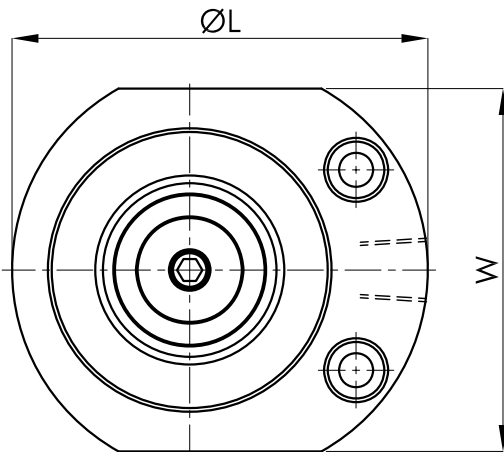


# SINGLE ACTING, SPRING RETURN FLAT JACKS



**SMHYDRA**  
HYDRAULIC SOLUTIONS

**J-03**  
Pg 1/1

**550 Series**

## Suitable Hand Pump

Tonnage	Model	Operating Stage	Oil Discharge
Upto 30T Jacks	HP-12	One	2.8 cc/stroke
Above 30T Jacks	HP-5012	1 <sup>st</sup> - upto 30 kg/cm <sup>2</sup>	49 cc/stroke
		2 <sup>nd</sup> - above 30 kg/cm <sup>2</sup>	2.8 cc/stroke

### Features:

- \* 700 kg/cm<sup>2</sup> Series
- \* Low Height Design for confined spaces
- \* Suitable for Jacking/ Pressing Application
- \* Mounting Hole for fixing the jacks
- \* Chrome Plated Body
- \* Motorised pumping units are also available

SLS5 Series (S) SMHYDRA (L) Low Height Jack (S) Single Acting Spring Return (5) 550 kg/cm<sup>2</sup> (05) Capacity (Ton) (20) Lift (mm)

Cylinder Capacity (tonnes)	Lift (mm)	Model/ Code	Effective Area (cm <sup>2</sup> )	Oil Capacity (cc)	Closed Height (mm) 'H'	Cylinder OD (mm) 'ØL'	Bore Dia. (mm) 'ØB'	Ram Dia. (mm) 'ØR'	A/F (mm) 'W'	Weight (Approx.) 'kg'
05	12	SLS5-05	12.6	15.1	56	70	40	20	55	1.3
10	20	SLS5-10	19.6	39.3	77	95	50	38	84	3.2
20	20	SLS5-20	38.5	76.9	77	110	70	50	96	4.4
25	20	SLS5-25	44.1	88.4	77	115	75	55	98	5
30	20	SLS5-30	56.7	113.5	78	120	85	63	105	6
50	20	SLS5-50	95	190	80	160	110	90	140	9.6
60	20	SLS5-60	113.1	226.1	85	180	120	95	152	12.9
75	20	SLS5-75	143.1	286.2	88	195	135	110	166	15.5
100	25	SLS5-100	176.7	441.8	95	235	150	115	202	23.4
150	25	SLS5-150	283.5	708.8	100	300	190	160	260	42.7
200	25	SLS5-200	363.1	907.6	110	340	215	170	295	58.6

**Note: Customized Jacks are available on request. The dimension are subjected to change on account of design improvement.**